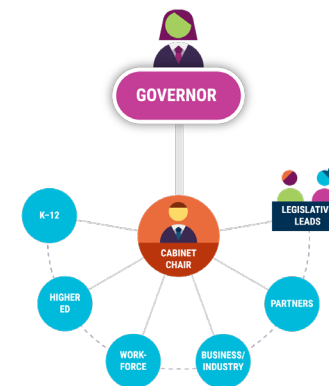


Indiana

The Cabinet Model

In Indiana, Governor Eric Holcomb has prioritized learner pathways from education to workforce to address the state's economic and community needs. In 2018, Indiana established the Governor's Workforce Cabinet (GWC) to identify those needs in the state and recommend ways to meet them. The GWC has worked across state agencies and the state's business community to develop an integrated plan and set of strategies to support learners in K–12, postsecondary, and the workforce. With its state and regional partners, the GWC has been tasked with coordinating the governor's Next Level Agenda, focused on supporting learners of all ages.



GOVERNANCE STRUCTURE

- As the name implies, the governor is empowered to appoint both cabinet staff, including the executive director, as well as cabinet members.
- Cabinet members include all major agency leaders, legislative members, and representatives from K-12 schools, higher education institutions, and business and industry.
- A key component of the structure is the intentional collection, sharing and analysis of data that spans multiple systems and institutions.

KEY ACTIONS AND RESPONSIBILITIES

- The GWC developed an integrated strategic workforce plan that serves as the state's combined Strengthening Career and Technical Education for the 21st Century Act (Perkins V) and WIOA plan. It also incorporates Temporary Assistance for Needy Families (TANF), the Supplemental Nutrition Assistance Program (SNAP), 21st Century Talent Regions, and state grant program funds.
- The GWC oversees the state career and technical (CTE) education program and was instrumental in overhauling the state's CTE program offerings, now dubbed Next Level Programs of Study.