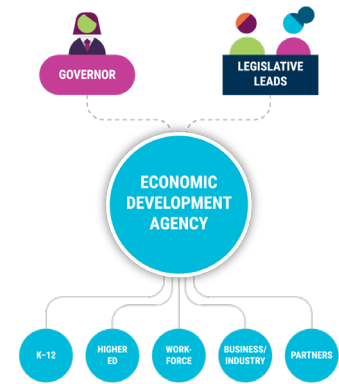


Mississippi

The Quarterback Model

In 2020, the Mississippi legislature charged the State Workforce Investment Board (SWIB) with developing the state's integrated workforce development system. The SWIB formed an Office of Workforce Development, known as AccelerateMS. Tasked with ensuring the state develops a "world-class workforce," AccelerateMS coordinates and supports the efforts of partner agencies (including K-12), higher education institutions, and community partners to support learners from classroom to career. As the quarterback agency, AccelerateMS has been empowered by both the executive and legislative branches to develop and execute upon its mission and strategic plan, which includes the grant funding to support higher-wage, high-demand, high skill pathways.



GOVERNANCE STRUCTURE

- AccelerateMS is overseen by the SWIB, whose members are comprised of individuals appointed by the governor and lieutenant governor, as well as several statewide officials
- The SWIB executive committee (with the advice and consent of members) hires the executive director of AccelerateMS
- AccelerateMS executive director regularly collaborates with executive and legislative branch leadership, including for the completion of required reports, to monitor progress and identify additional needs

KEY ACTIONS AND RESPONSIBILITIES

- Coordinate the state's workforce strategy across other relevant agencies and institutions and oversee the Workforce Enhancement Training Fund to promote valued programs in community colleges
- In collaboration with other agencies, conduct a Return on Investment (ROI) analysis of K-12 and postsecondary CTE and workforce programs
- Serve as the coordinating entity for revision and rewrite of the state's Workforce Innovation and Opportunity Act plan